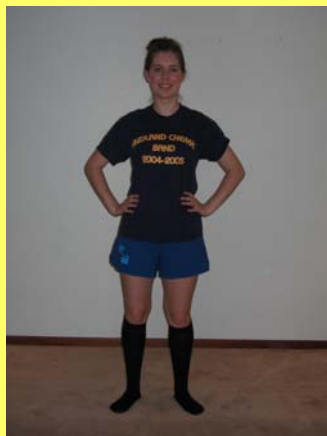


How to Properly put on a MHS Band Uniform

MHS Music Parents Association
2008

Getting Started!



- Hair pulled off the collar for both guys & girls
- Dark blue/black shirt - the best shirt is a MHS band shirt
- Wear sports shorts or spandex shorts
- NO jeans, jean shorts or cargo pants
- Tall black socks
- No jewelry, bright colored nail polish, face paint, or extravagant make up

MHS Music Parents Association
2008

Hair

- Hair should be up in a high pony tail, bun, or pigtails to allow for the hat to fit over it
- Loose short hairs should be pinned up with flat to head bobby pins/clips
- Hairnets are appropriate if needed



MHS Music Parents Association
2008

Pants

- Pants **SHOULD** come above natural waist



MHS Music Parents Association
2008

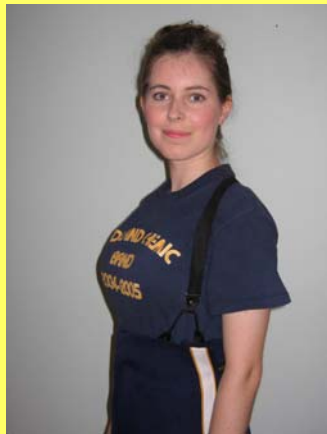
The Proper Pant Length

- Pants come to the top of the shoe with NO break in the crease
- The pants should be hemmed with a loose stitch that comes out easily at the end of the season
- Pants should NOT be taped, stapled, or cut!



MHS Music Parents Association
2008

Suspenders



- When suspenders are properly adjusted for comfort a safety pin may be used on both sides to secure length of suspender

MHS Music Parents Association
2008

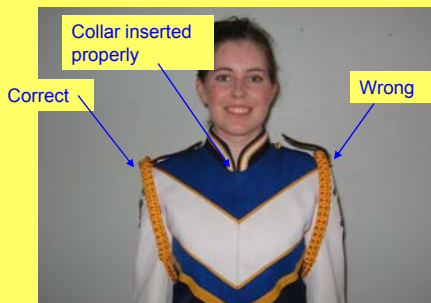
Spats

- Spats should be wiped clean before each game
- Spats are worn with snaps on the outside
- Elastic slips under the shoe, into the groove the heel of the shoe creates



MHS Music Parents Association
2008

Front view of Jacket



- Jacket should be clean, dry cleaned when necessary
- No eating/drinking when wearing uniform
(exceptions - H₂O & 3rd quarter apples)

MHS Music Parents Association
2008

Coat



- Coat is zipped in the back
- Removable collar must be worn to collect sweat and must be washed after every game

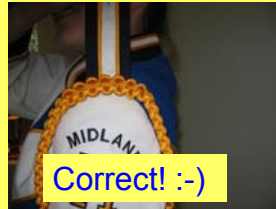
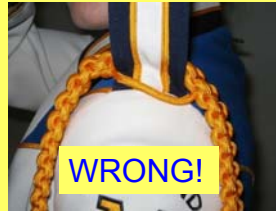
Sleeve length



- The sleeve should come down to the top of the thumb
- When playing the instrument there should be no skin showing between the gloves and the end of the sleeve.
- There should be no nail polish

Cords

- Gold Cords are worn on each arm
- Cords slip over the button flap and arm slips through



MHS Music Parents Association
2008

Cape

- Capes are attached by 4 buttons
- Parents are available before games for emergency repairs
- Cape should be REMOVED from coat after every game and hung separately



MHS Music Parents Association
2008

A Uniform Worn Properly



MHS Music Parents Association
2008

Side view



- Hat straight on head
- Hair off of the collar
- Cape worn gold side out
- Pants correct length
- Clean spats
- Black shoes with heels.

MHS Music Parents Association
2008

Back of Uniform



- Hair above collar
- Hook and eye clipped together
- Gold side of cape out
- Cape is as wrinkle-free as possible

MHS Music Parents Association
2008

Keeping the Uniform Clean

DRY CLEAN

- Pants
(NO suspenders)
- Coat
(NO cords or collar)
- Cape

MACHINE WASH

(mild bleach is ok)

- Collar
- Gloves

WIPE WITH DAMP CLOTH

- Hat
- Spats

MHS Music Parents Association
2008

Uniforms are Expensive ...

Please help us take care of them

Chemic Marching Band

Uniform Care and Cleaning

The two most important things to remember about this uniform:
1. NEVER CUT OFF ANY OF THE JACKET OR PANTS FABRIC
2. DRY CLEAN UNIFORM AFTER EACH PERFORMANCE.

Never cut off any fabric from the uniform. The extra fabric may be needed for future fittings. We need to get many more years of use out of these uniforms.

Dry clean the uniforms after each performance. This will prolong the life of the uniform.

We use Roth Cleaners for the uniforms at the end of the year. Art Cleaners and QuikStop Cleaners are also highly recommended.

Students are expected to maintain clean shoes, gloves and cords and hat. The cords are **not** to be dry cleaned.

Spats should be cleaned with mild soap and water after every game.

The collar in the jacket should be washed after every game.

Gloves should be washed after every game.

To wash gloves and collar you can get a dish soap (such as Dawn with bleach) that cuts grease. Gently unsnap the collar put on the gloves and put a little soap in your hands. Wash the gloves and collar just as if you were washing your hands. Rinse very well. Air dry.

After the game hang the jacket on the formed hanger that came with it.

Always take the cape off the jacket. Leaving the cape on the jacket stretches out the button holes.

Be sure to hang the pants evenly balanced and neatly creased.

Plumes will be handed out **before** and turned in **after** every performance.

Uniform parents will be available before every game for repairs to the uniform.

Never eat in uniform, **unless** given permission by the directors. Plan to eat before dressing in the uniform. Water and apples will be provided at the football games.

The student is responsible for every part of the uniform. When you are in uniform, you are in full uniform. Treat your uniform with pride. The replacement cost of a band uniform is well over \$1,000.

Note: Student must provide black shoes, black socks, and white gloves. Gloves are to be purchased from MHS Music Parents at a cost of \$2.50 per pair.

Student has received the parts for this uniform indicated above. Student is responsible for the return of this uniform in good condition and all parts as listed at the end of the school year (or in the event that he/she is no longer enrolled in MHS Bands.

Students will be charged for lost or damaged uniform parts.
(see cost of uniform parts as listed below)

Uniform Parts - Minimum Replacement Costs (prices subject to increase)

Coat \$450.00	Pants \$175.00	Cape \$134.00	Hat \$69.00
Collar insert 6.00	Suspenders \$ 3.25	Spats \$5.75 pr	
Cords \$15.00 pr.	Hanger \$ 2.00	Beret (tuba) \$6.50	

If you need help ...

- Parents are available in the uniform room (before games & performances) to help with anything from fitting to repair
- Quartermasters are available during weekday band class to answer questions from students
 - Emma Peeler – 4th hour
 - Lena Graham – 5th hour
- In an emergency contact the uniform representative for information
 - Shannon Krueger – 835-5540